

ダイカン浄化槽

CN・RT型 ■処理対象人員:51人~5,000人
■処理方式:接触ばつ気方式



ダイカン浄化槽は、すべての使用条件に対応が可能。 51人より5,000人までの機種が揃っています。

◎ダイカン浄化槽は接触ばつ気方式による沈殿分離タイプと流量調整タイプがあります。

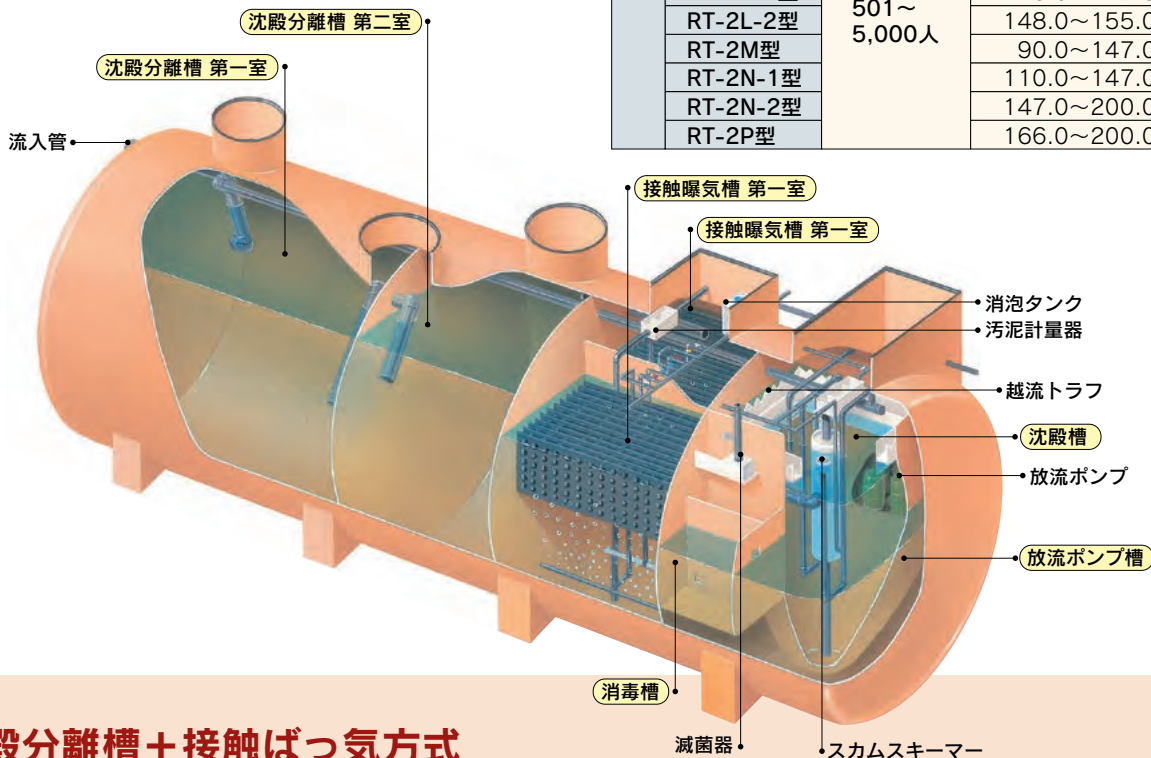
◎処理対象人員51人より5,000人まで、汚水量7.5m³/日～200m³/日までとなっています。

■沈殿分離タイプ ダイカンCN型

BOD 20 mg /ℓ	型 式	処理対象人員(人)	日平均汚水量(m ³ /日)	槽数
		CN-2A型	51～ 500人	7.5～11.0
	CN-2B型	11.0～20.0		1
	CN-2C型	20.0～21.0		1
	CN-2D型	21.0～31.2		2
	CN-2E型	26.0～40.0		2

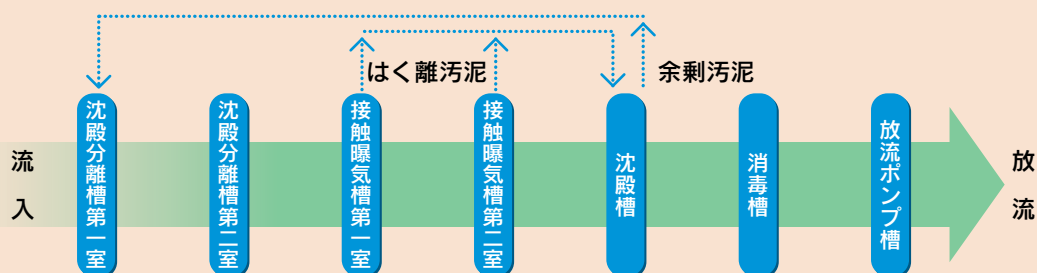
■流量調整タイプ ダイカンRT型

BOD 20 mg /ℓ	型 式	処理対象人員(人)	日平均汚水量(m ³ /日)	槽数
	101～ 500人	RT-2A型	101～ 500人	15.0～ 28.0
RT-2B-1型		31.0～ 36.0		1
RT-2B-2型		25.0～ 34.0		1
RT-2C-1型		35.0～ 60.0		2
RT-2C-2型		24.0～ 41.0		2
RT-2E-1型		40.0～ 60.0		3
RT-2E-2型		37.0～ 41.0		3
RT-2FA型		63.0～ 73.0		3
RT-2FB型		75.0～ 79.0		3
RT-2F-1型		60.0～ 88.0		3
RT-2F-2型		60.0～ 83.0		3
RT-2G-1型		60.0～100.0		4
RT-2G-2型		60.0～ 83.0		4
RT-2H-1型		66.0～100.0		5
RT-2H-2型	70.0～ 83.0	5		
501～ 5,000人	RT-2J型	501～ 5,000人	61.0～109.0	4
	RT-2K-1型		69.0～147.0	6
	RT-2K-2型		148.0～150.0	6
	RT-2L-1型		116.0～147.0	7
	RT-2L-2型		148.0～155.0	7
	RT-2M型		90.0～147.0	8
	RT-2N-1型		110.0～147.0	9
	RT-2N-2型		147.0～200.0	9
	RT-2P型		166.0～200.0	10



●沈殿分離槽＋接触ばつ気方式

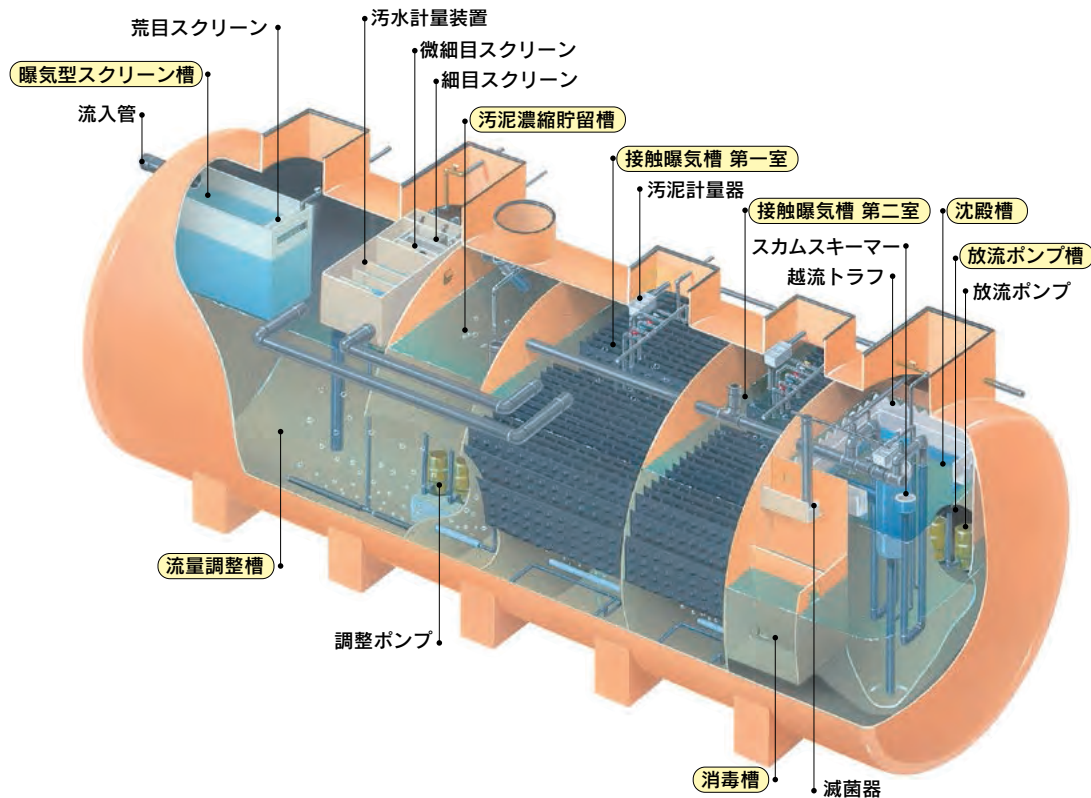
◆フローシート◆



槽の直径が2,800φのため 設置面積が小さく、施工が早く確実です。

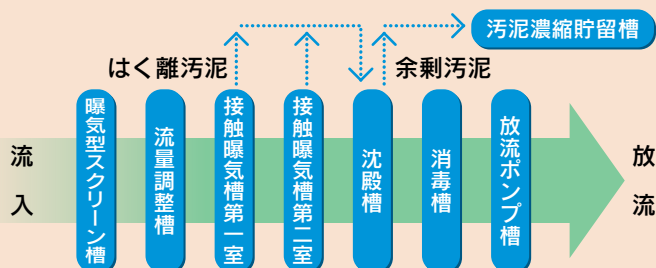
●特徴

- ◎直径が2,800φのため設置面積が少なくすみずみです。
沈殿分離タイプは処理能力7.5m³/日～21.0m³/日まで1槽式です。
流量調整タイプは処理能力15.0m³/日～36.0m³/日まで1槽式です。
- ◎直径が2,800φのため流入管低GL-1500まで自然流入が可能です。(流量調整型)
- ◎沈殿槽は、101人から500人槽まで本体に組み込んでいますので、底版はフラットとなります。
この方法によって、現場施工が簡単となり、安定した基礎を得ることが出来ます。
- ◎同上の結果、接続配管が不要となり、汚水の処理工程も直線的となりますので維持管理が容易となります。



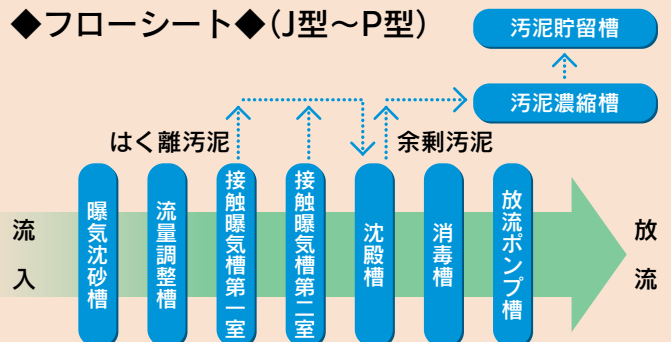
●流量調整槽＋接触ばっ気方式

◆フローシート◆(A型～H-2型)



●流量調整槽＋接触ばっ気方式

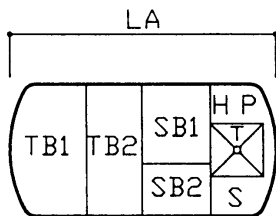
◆フローシート◆(J型～P型)



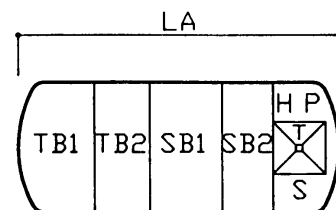
沈殿分離タイプ ダイカンCN型 機種・槽タイプ表

流入水質 (BOD)	200、250、300mg/ℓ						
処理対象人員(人) 汚水量(m³/日)	51~125	126~150	151~500	処理対象人員(人) 汚水量(m³/日)	51~125	126~150	151~500
7.5	A	A	A	24.0	D	D	D
9.0	A	A	A	25.0	D	D	D
11.0	A	A	A	26.0	D	D	D
12.0	B	B	B	27.0	D	D	D
14.0	B	B <td B	30.0	D	D	D	
16.0	B	B	B	31.0	D	D	D
17.0	B	B	B	32.0	E	E	E
19.0	B	B	B	35.0	E	E	E
20.0	B	B	B	37.5	E	E	E
22.0	D	C・D	C・D	40.0	E	E	E

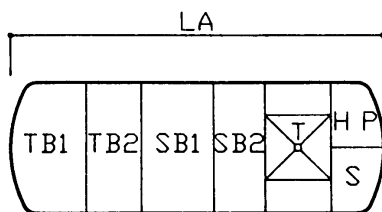
Aタイプ



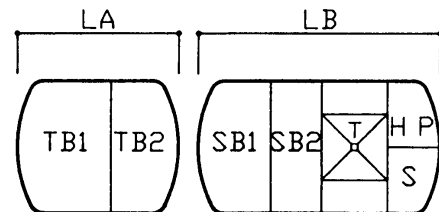
Bタイプ



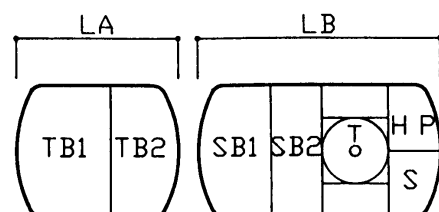
Cタイプ



Dタイプ



Eタイプ



記号説明

- TB1: 沈殿分離槽第一室
- TB2: 沈殿分離槽第二室
- SB1: 接触曝気槽第一室
- SB2: 接触曝気槽第二室
- T : 沈殿槽
- S : 消毒槽
- HP: 放流ポンプ

沈殿分離タイプ ダイカンCN-2型

参考寸法表

●流入水質/BOD 200mg/ℓ・250mg/ℓ・300mg/ℓ ●放流水質/BOD 20mg/ℓ以下

汚水量 (m ³ /日)	流入水質 (mg/ℓ)	処理対象人員							
		51~125人		126~150人	151~175人	176~500人			
7.5	200	A	LA= 5,080						
	250	A	LA= 5,320						
	300	A	LA= 5,550						
9.0	200	A	LA= 5,720						
	250	A	LA= 6,000						
	300	A	LA= 6,280						
10.0	200	A	LA= 6,160						
	250	A	LA= 6,470						
	300	A	LA= 6,780						
11.0	200	A	LA= 6,590						
	250	A	LA= 6,930						
	300	A	LA= 7,280						
12.0	200	B	LA= 7,020	B	6,770				
	250	B	LA= 7,390	B	7,140				
	300	B	LA= 7,770	B	7,520				
13.0	200	B	LA= 7,450	B	7,180	B	7,000		
	250	B	LA= 7,860	B	7,590	B	7,410		
	300	B	LA= 8,260	B	7,990	B	7,810		
14.0	200	B	LA= 7,890	B	7,600	B	7,400		
	250	B	LA= 8,330	B	8,040	B	7,840		
	300	B	LA= 8,760	B	8,470	B	8,270		
15.0	200	B	LA= 8,320	B	8,000	B	7,800		
	250	B	LA= 8,790	B	8,470	B	8,270		
	300	B	LA= 9,250	B	8,930	B	8,730		
16.0	200	B	LA= 8,850	B	8,880	B	8,300		
	250	B	LA= 9,350	B	9,380	B	8,800		
	300	B	LA= 9,840	B	9,870	B	9,290		
17.0	200	B	LA= 9,280	B	8,920	B	8,700		
	250	B	LA= 9,810	B	9,450	B	9,230		
	300	B	LA= 10,340	B	9,980	B	9,760		
18.0	200	B	LA= 9,690	B	9,310	B	9,070		
	250	B	LA= 10,220	B	9,840	B	9,600		
	300	B	LA= 10,750	B	10,370	B	10,130		
19.0	200	B	LA= 10,250	B	9,840	B	9,410	B	9,010
	250	B	LA= 10,850	B	10,440	B	10,010	B	9,610
	300	B	LA= 11,430	B	11,020	B	10,590	B	10,190
20.0	200	B	LA= 10,680	B	10,260	B	9,990	B	9,800
	250	B	LA= 11,300	B	10,880	B	10,610	B	10,420
	300	B	LA= 11,920	B	11,500	B	11,230	B	11,040
21.0	200	C	LA= 12,380	C	11,940	C	11,650	C	11,450
	250	D	LA= 6,870	C	12,590	C	12,300	C	12,100
		D	LB= 6,550						
	300	D	LA= 6,870	D	6,420	D	6,140	D	5,940
			LB= 7,200		5,900		7,200		7,200

沈殿分離タイプ ダイカンCN-2型

参考寸法表

●流入水質/BOD 200mg/ℓ・250mg/ℓ・300mg/ℓ

●放流水質/BOD 20mg/ℓ以下

汚水量 (m ³ /日)	流入水質 (mg/ℓ)	処 理 対 象 人 員			
		51~125人	126~150人	151~175人	176~500人
22.0	200	D LA= 7,170 LB= 6,030	C LA= 12,350	C LA= 12,060	C LA= 11,840
	250	D LA= 7,170 LB= 6,710	D 6,700 6,710	D 6,410 6,710	D 6,190 6,730
	300	D LA= 7,170 LB= 7,400	D 6,700 7,400	D 6,410 7,400	D 6,190 7,400
23.0	200	D LA= 7,480 LB= 6,150	D 6,990 6,150	D 6,990 6,150	D 6,460 6,150
	250	D LA= 7,480 LB= 6,860	D 6,990 6,860	D 6,990 6,860	D 6,460 6,860
	300	D LA= 7,480 LB= 7,580	D 6,990 7,580	D 6,990 7,580	D 6,460 7,580
24.0	200	D LA= 7,780 LB= 6,270	D 7,280 6,270	D 6,960 6,270	D 6,730 6,270
	250	D LA= 7,780 LB= 7,020	D 7,280 7,020	D 6,960 7,020	D 6,730 7,020
	300	D LA= 7,780 LB= 7,760	D 7,280 7,760	D 6,960 7,760	D 6,730 7,760
25.0	200	D LA= 8,100 LB= 6,400	D 7,570 6,400	D 7,240 6,400	D 6,990 6,400
	250	D LA= 8,100 LB= 7,180	D 7,570 7,180	D 7,240 7,180	D 6,990 7,180
	300	D LA= 8,100 LB= 7,950	D 7,570 7,950	D 7,240 7,950	D 6,990 7,950
26.0	200	D LA= 8,430 LB= 6,720	D 7,870 6,720	D 7,520 6,720	D 7,260 6,720
	250	D LA= 8,430 LB= 7,530	D 7,870 7,530	D 7,520 7,530	D 7,260 7,530
	300	D LA= 8,430 LB= 8,330	D 7,870 8,330	D 7,520 8,330	D 7,260 8,330
27.0	200	D LA= 8,710 LB= 6,850	D 8,130 6,850	D 7,780 6,850	D 7,510 6,850
	250	D LA= 8,710 LB= 7,680	D 8,130 7,680	D 7,780 7,680	D 7,510 7,680
	300	D LA= 8,710 LB= 8,520	D 8,130 8,520	D 7,780 8,520	D 7,510 8,520
29.0	200	D LA= 9,350 LB= 7,100	D 8,730 7,100	D 8,340 7,100	D 8,060 7,100
	250	D LA= 9,350 LB= 8,000	D 8,730 8,000	D 8,340 8,000	D 8,060 8,000
	300	D LA= 9,350 LB= 8,900	D 8,730 8,900	D 8,340 8,900	D 8,060 8,900

■参考寸法表

●流入水質/BOD 200mg/ℓ・250mg/ℓ・300mg/ℓ ●放流水質/BOD 20mg/ℓ以下

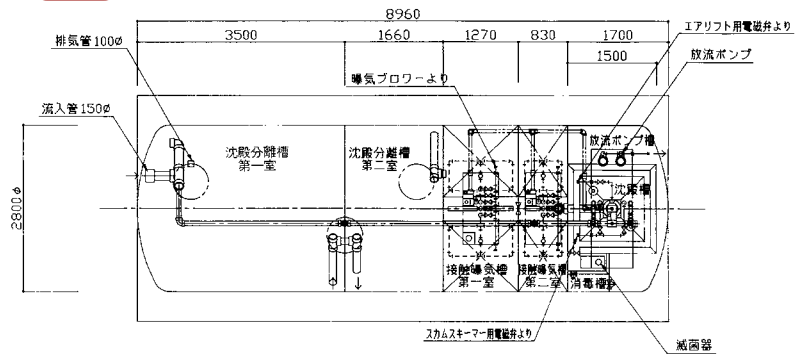
汚水量 (m ³ /日)	流入水質 (mg/ℓ)	処 理 対 象 人 員							
		51～125人		126～150人		151～175人		176～500人	
30.0	200	D	LA= 9,330 LB= 7,220	D	9,000 7,220	D	8,620 7,220	D	8,310 7,220
		D	LA= 9,330 LB= 8,150	D	9,000 8,150	D	8,620 8,150	D	8,310 8,150
	250	D	LA= 9,330 LB= 9,080	D	9,000 9,080	D	8,620 9,080	D	8,310 9,080
		D	LA= 9,330 LB= 9,080	D	9,000 9,080	D	8,620 9,080	D	8,310 9,080
	300	D	LA= 9,330 LB= 9,080	D	9,000 9,080	D	8,620 9,080	D	8,310 9,080
		D	LA= 9,330 LB= 9,080	D	9,000 9,080	D	8,620 9,080	D	8,310 9,080
31.0	200	D	LA= 9,960 LB= 7,370	D	9,300 7,370	D	8,870 7,370	D	8,590 7,370
		D	LA= 9,960 LB= 8,330	D	9,300 8,330	D	8,870 8,330	D	8,590 8,330
	250	D	LA= 9,960 LB= 8,330	D	9,300 8,330	D	8,870 8,330	D	8,590 8,330
		D	LA= 9,960 LB= 9,300	D	9,300 9,300	D	8,870 9,300	D	8,590 9,300
	300	D	LA= 9,960 LB= 9,300	D	9,300 9,300	D	8,870 9,300	D	8,590 9,300
		D	LA= 9,960 LB= 9,300	D	9,300 9,300	D	8,870 9,300	D	8,590 9,300
32.0	200	E	LA= 10,240 LB= 7,760	E	9,560 7,760	E	9,130 7,760	E	8,830 7,760
		E	LA= 10,240 LB= 8,750	E	9,560 8,750	E	9,130 8,750	E	8,830 8,750
	250	E	LA= 10,240 LB= 8,750	E	9,560 8,750	E	9,130 8,750	E	8,830 8,750
		E	LA= 10,240 LB= 9,740	E	9,560 9,740	E	9,130 9,740	E	8,830 9,740
	300	E	LA= 10,240 LB= 9,740	E	9,560 9,740	E	9,130 9,740	E	8,830 9,740
		E	LA= 10,240 LB= 9,740	E	9,560 9,740	E	9,130 9,740	E	8,830 9,740
34.0	200	E	LA= 10,880 LB= 8,010	E	10,160 8,010	E	9,700 8,010	E	9,370 8,010
		E	LA= 10,880 LB= 9,060	E	10,160 9,060	E	9,700 9,060	E	9,370 9,060
	250	E	LA= 10,880 LB= 9,060	E	10,160 9,060	E	9,700 9,060	E	9,370 9,060
		E	LA= 10,880 LB= 10,120	E	10,160 10,120	E	9,700 10,120	E	9,370 10,120
	300	E	LA= 10,880 LB= 10,120	E	10,160 10,120	E	9,700 10,120	E	9,370 10,120
		E	LA= 10,880 LB= 10,120	E	10,160 10,120	E	9,700 10,120	E	9,370 10,120
36.0	200	E	LA= 11,500 LB= 8,250	E	10,740 8,250	E	10,250 8,250	E	9,900 8,250
		E	LA= 11,500 LB= 9,370	E	10,740 9,370	E	10,250 9,370	E	9,900 9,370
	250	E	LA= 11,500 LB= 9,370	E	10,740 9,370	E	10,250 9,370	E	9,900 9,370
		E	LA= 11,500 LB= 10,490	E	10,740 10,490	E	10,250 10,490	E	9,900 10,490
	300	E	LA= 11,500 LB= 10,490	E	10,740 10,490	E	10,250 10,490	E	9,900 10,490
		E	LA= 11,500 LB= 10,490	E	10,740 10,490	E	10,250 10,490	E	9,900 10,490
38.0	200	E	LA= 12,100 LB= 8,500	E	11,290 8,500	E	10,780 8,500	E	10,410 8,500
		E	LA= 12,100 LB= 9,690	E	11,290 9,690	E	10,780 9,690	E	10,410 9,690
	250	E	LA= 12,100 LB= 9,690	E	11,290 9,690	E	10,780 9,690	E	10,410 9,690
		E	LA= 12,100 LB= 10,870	E	11,290 10,870	E	10,780 10,870	E	10,410 10,870
	300	E	LA= 12,100 LB= 10,870	E	11,290 10,870	E	10,780 10,870	E	10,410 10,870
		E	LA= 12,100 LB= 10,870	E	11,290 10,870	E	10,780 10,870	E	10,410 10,870
40.0	200	E	LA= 12,710 LB= 8,750	E	11,860 8,750	E	11,320 8,750	E	10,930 8,750
		E	LA= 12,710 LB= 8,990	E	11,860 8,990	E	11,320 8,990	E	10,930 8,990
	250	E	LA= 12,710 LB= 8,990	E	11,860 8,990	E	11,320 8,990	E	10,930 8,990
		E	LA= 12,710 LB= 11,240	E	11,860 11,240	E	11,320 11,240	E	10,930 11,240
	300	E	LA= 12,710 LB= 11,240	E	11,860 11,240	E	11,320 11,240	E	10,930 11,240
		E	LA= 12,710 LB= 11,240	E	11,860 11,240	E	11,320 11,240	E	10,930 11,240

沈殿分離タイプ ダイカンCN型 構造図・設備電力容量表

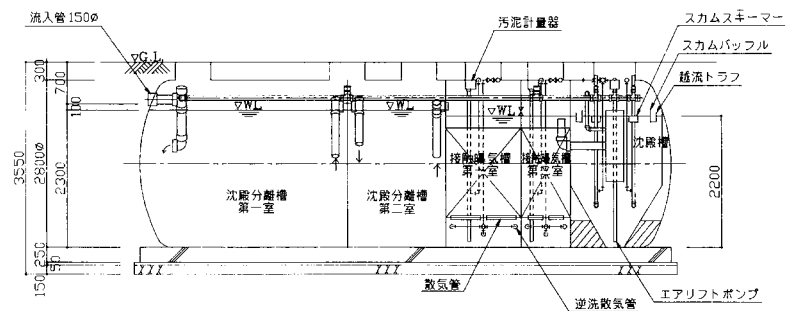
参考構造図

- ◎型式 ダイカンCN-2B型
- ◎処理対象人員 80人
- ◎日平均汚水量 16.0m³/日
- ◎流入水質BOD 200mg/ℓ
- ◎放流水質BOD 20mg/ℓ

平面図



側面図



ダイカンCN型設備電力容量表

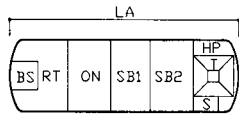
日平均 汚水量(m ³ /日)	機器名 仕様		ばっ気ブロワー				放流 ポンプ	汚泥 掻寄機		
			流入水質 BOD 200mg/ℓ		流入水質 BOD 250mg/ℓ				kW	kW
	m ³ /分	kW	m ³ /分	kW	m ³ /分	kW				
7.5	0.35	0.4	0.4	0.75	0.5	0.75	0.25 ×2台			
10.0	0.4	0.75	0.65	0.75	0.65	0.75				
12.0	0.5	0.75	↓	↓	0.8	1.5				
14.0	↓	↓	↓	↓	↓	↓				
16.0	0.65	0.75	0.8	1.5	1.1	1.5				
18.0	↓	↓	↓	↓	↓	↓				
19.0	↓	↓	1.1	1.5	↓	↓				
20.0	0.8	1.5	↓	↓	↓	↓				
21.0	↓	↓	↓	↓	↓	↓				
22.0	↓	↓	↓	↓	1.4	2.2				
24.0	1.1	1.5	↓	↓	↓	↓				
25.0	↓	↓	↓	↓	↓	↓				
27.0	↓	↓	1.4	2.2	↓	↓				
30.0	↓	↓	↓	↓	1.8	2.2				
32.0	↓	↓	↓	↓	↓	↓				
35.0	1.4	2.2	1.8	2.2	↓	↓				
38.0	↓	↓	↓	↓	2.09	1.5				
40.0	1.8	2.2	↓	↓	↓	↓				
							0.1 ×1台			

●放流ポンプの標準仕様は揚程5mとなっていますが、放流先の状況によって、仕様が変更になることがあります。

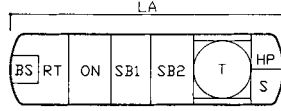
流量調整タイプ ダイカンRT-2型 槽タイプ表

■Aタイプ～G-2タイプ:101～500人槽

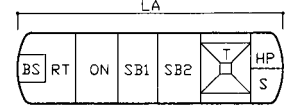
Aタイプ



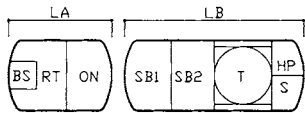
B-1タイプ



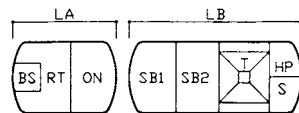
B-2タイプ



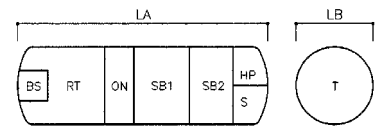
C-1タイプ



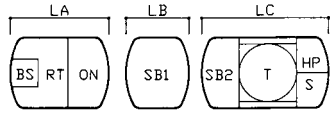
C-2タイプ



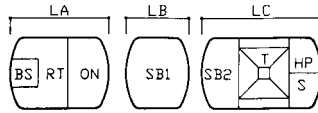
CAタイプ



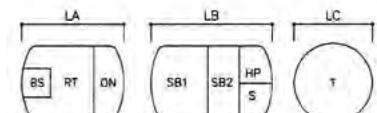
E-1タイプ



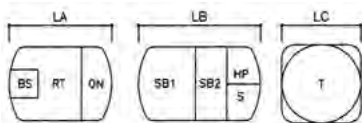
E-2タイプ



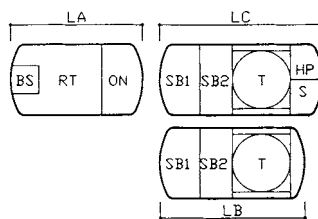
FAタイプ



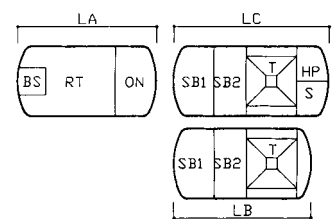
FBタイプ



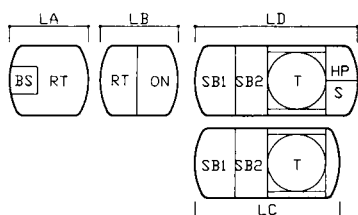
F-1タイプ



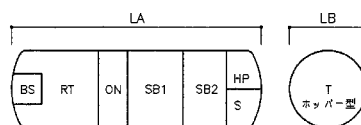
F-2タイプ



G-1タイプ



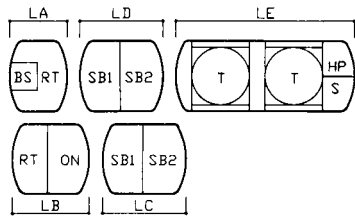
G-2タイプ



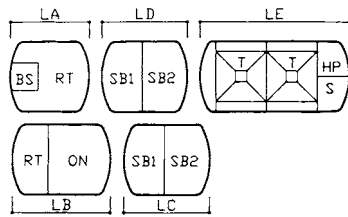
流量調整タイプ ダイカンRT-2型 槽タイプ表

■H-1タイプ～HAタイプ:101～500人槽

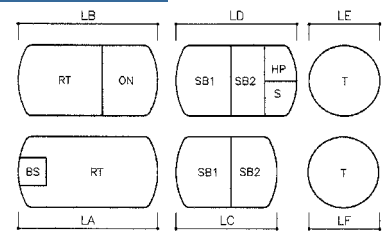
H-1タイプ



H-2タイプ

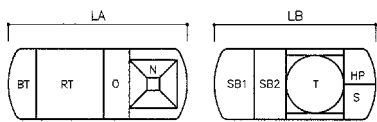


HAタイプ

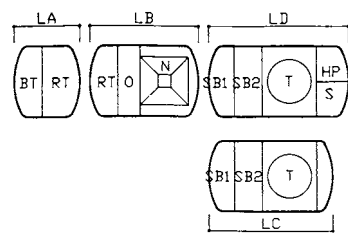


■JAタイプ～Pタイプ:501～5,000人槽

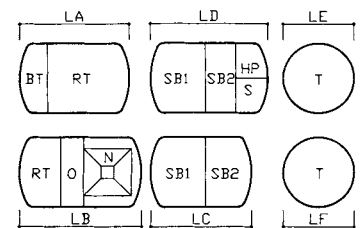
JAタイプ



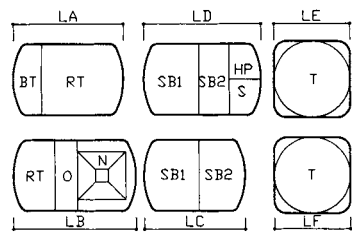
Jタイプ



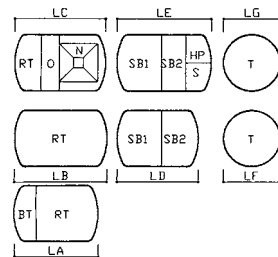
K-1タイプ



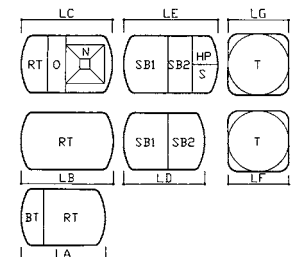
K-2タイプ



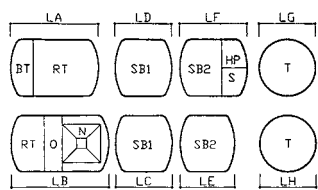
L-1タイプ



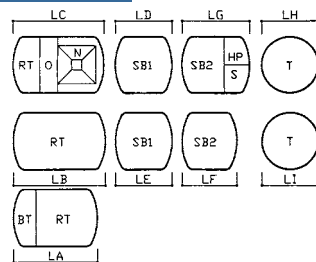
L-2タイプ



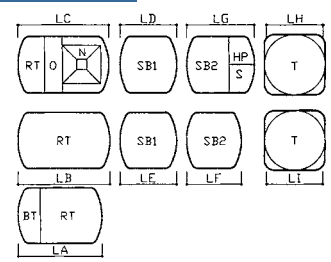
Mタイプ



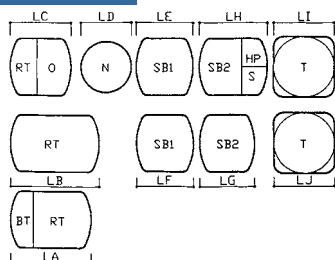
N-1タイプ



N-2タイプ



Pタイプ



記号説明

- | | |
|---------------|---------------|
| BS: 曝気型スクリーン槽 | SB1: 接触曝気槽第一室 |
| BT: 曝気沈砂槽 | SB2: 接触曝気槽第二室 |
| RT: 流量調整槽 | T: 沈殿槽 |
| ON: 汚泥濃縮貯留槽 | S: 消毒槽 |
| O: 汚泥貯留槽 | HP: 放流ポンプ槽 |
| N: 汚泥濃縮槽 | |

流量調整タイプ ダイカンRT-2型

■参考寸法表 ●流入水質/BOD 200mg/ℓ・250mg/ℓ・300mg/ℓ・350mg/ℓ ●放流水質/BOD 20mg/ℓ以下

処理対象人員(人) **101~500**

流入水質(BOD)	200mg/ℓ			250mg/ℓ			300mg/ℓ			350mg/ℓ		
	排水時間(H)	12	10	8	12	10	8	12	10	8	12	10
15.0	A LA= 6,730	A 6,730	A 6,970	A 6,810	A 6,810	A 7,050	A 7,710	A 7,710	A 7,950	A 8,210	A 8,210	A 8,450
19.0	A LA= 7,370	A 7,710	A 8,050	A 7,990	A 8,330	A 8,670	A 8,600	A 8,940	A 9,280	A 9,200	A 9,540	A 9,880
20.0	A LA= 7,600	A 7,960	A 8,320	A 8,250	A 8,610	A 8,970	A 8,900	A 9,260	A 9,620	A 9,620	A 9,980	A 10,340
25.0	A LA= 8,890	A 9,340	A 9,790	A 9,700	A 10,150	A 10,600	A 10,610	A 11,060	A 11,510	C-2 LA= 4,380 LB= 9,340	C-2 4,830 9,340	C-2 5,280 9,340
28.0	A LA= 9,680	A 10,190	A 10,690	A 10,600	A 11,110	A 11,610	A 11,700	A 12,210	C-2 LA= 5,640 LB= 9,070	C-2 4,830 10,000	C-2 5,340 10,000	C-2 5,840 10,000
30.0	B-2 LA= 11,430	B-2 11,970	C-2 LA= 5,930 LB= 7,560	C-2 4,850 8,520	C-2 5,390 8,520	C-2 5,930 8,520	C-2 4,940 9,490	C-2 5,480 9,490	C-2 6,020 9,490	C-2 5,150 10,460	C-2 5,690 10,460	C-2 6,230 10,460
33.0	B-2 LA= 12,130	C-2 LA= 5,770 LB= 7,930	C-2 6,360 7,930	C-2 5,170 9,000	C-2 5,770 9,000	C-2 6,360 9,000	C-2 5,420 10,060	C-2 6,020 10,060	C-2 6,610 10,060	C-2 5,600 10,660	C-2 6,200 10,660	C-2 6,790 10,660
35.0	B-1 LA= 12,330	C-2 LA= 6,020 LB= 8,390	C-2 6,650 8,390	C-2 5,460 9,520	C-2 6,090 9,520	C-2 6,720 9,520	C-2 5,690 10,650	C-2 6,320 10,650	C-2 6,950 10,650	C-2 5,950 11,780	C-2 6,580 11,780	C-2 7,210 11,780
36.0	B-1 LA= 12,580	C-2 LA= 6,150 LB= 8,500	C-2 6,800 8,500	C-2 5,570 9,660	C-2 6,220 9,660	C-2 6,870 9,660	C-2 5,820 10,820	C-2 6,470 10,820	C-2 7,120 10,820	C-2 6,070 11,980	C-2 6,720 11,980	C-2 7,370 11,980
38.0	C-2 LA= 5,710 LB= 8,750	C-2 6,400 8,750	C-2 7,080 8,750	C-2 5,840 9,980	C-2 6,530 9,980	C-2 7,210 9,980	C-2 6,110 11,210	C-2 6,800 11,210	C-2 7,480 11,210	C-2 6,370 12,430	C-2 7,060 12,430	C-2 7,740 12,430
40.0	C-2 LA= 5,930 LB= 9,060	C-2 6,650 9,060	C-2 7,370 9,060	C-2 6,160 10,330	C-2 6,880 10,330	C-2 7,600 10,330	C-2 6,460 11,630	C-2 7,180 11,630	C-2 7,900 11,630	E-2 LA= 6,680 LB= 6,580 LC= 7,760	E-2 7,400 6,580 7,760	E-2 8,120 6,580 7,760
45.0	C-1 LA= 6,520 LB= 10,000	C-1 7,330 10,000	C-1 8,140 10,000	C-1 6,830 11,400	C-1 7,640 11,400	C-1 8,450 11,400	E-1 LA= 7,140 LB= 6,380 LC= 7,620	E-1 7,950 6,380 7,620	E-1 8,780 6,380 7,620	E-1 7,450 7,270 8,210	E-1 8,260 7,270 8,210	E-1 9,070 7,270 8,210
50.0	C-1 LA= 7,190 LB= 10,620	C-1 8,090 10,620	C-1 8,990 10,620	C-1 7,530 12,220	C-1 8,430 12,220	C-1 9,330 12,220	E-1 LA= 7,870 LB= 6,970 LC= 8,010	E-1 8,770 6,970 8,010	E-1 9,670 6,970 8,010	E-1 8,310 7,940 8,660	E-1 9,210 7,940 8,660	E-1 10,110 7,940 8,660
53.0	C-1 LA= 7,580 LB= 10,980	C-1 8,530 10,980	C-1 9,490 10,980	E-1 LA= 7,990 LB= 6,280 LC= 7,560	E-1 8,940 6,280 7,560	E-1 9,900 6,280 7,560	E-1 8,370 7,310 8,250	E-1 9,320 7,310 8,250	E-1 10,280 7,310 8,250	E-1 8,750 8,340 8,940	E-1 9,700 8,340 8,940	E-1 10,660 8,340 8,940
55.0	C-1 LA= 7,840 LB= 11,240	C-1 8,830 11,240	C-1 9,830 11,240	E-1 LA= 8,230 LB= 6,480 LC= 7,690	E-1 9,220 6,480 7,690	E-1 10,220 6,480 7,690	E-1 8,650 7,550 8,410	E-1 9,640 7,550 8,410	E-1 10,640 7,550 8,410	E-1 9,050 8,620 9,120	E-1 10,040 8,620 9,120	E-1 11,040 8,620 9,120
60.0	C-1 LA= 8,520 LB= 11,890	C-1 9,610 11,890	C-1 10,690 11,890	E-1 LA= 8,940 LB= 6,970 LC= 8,020	E-1 10,030 6,970 8,020	E-1 11,110 6,970 8,020	E-1 9,390 8,130 8,790	E-1 10,480 8,130 8,790	E-1 11,560 8,130 8,790	E-1 9,790 9,300 9,570	E-1 10,880 9,300 9,570	E-1 11,960 9,300 9,570

流量調整タイプ ダイカンRT-2型

■参考寸法表 ●流入水質/BOD 200mg/ℓ・250mg/ℓ・300mg/ℓ・350mg/ℓ ●放流水質/BOD 20mg/ℓ以下

処理対象人員(人)		101~500											
流入水質(BOD)		200mg/ℓ			250mg/ℓ			300mg/ℓ			350mg/ℓ		
汚水量(m ³ /日)	排水時間(H)	12	10	8	12	10	8	12	10	8	12	10	8
	63.0	FA	FA	FA	F-2	F-2	F-2	F-2	F-2	F-2	F-2	F-2	F-2
LA=		8,420	9,550	10,690	9,360	10,500	11,630	9,710	10,850	11,980	10,240	11,380	LB= 6,440
LB=		9,680	9,680	9,680	8,020	8,020	8,020	9,050	9,050	9,050	10,070	10,070	LC= 10,070
LC=		2,800	2,800	2,800	8,730	8,730	8,730	9,760	9,760	9,760	10,780	10,780	LD= 10,780
65.0	FA	FA	FA	F-2	F-2	F-2	F-2	F-2	G-2 LA= 6,550	F-2	F-2	G-2 6,550	
	LA=	8,630	9,810	10,980	9,650	10,820	11,990	10,100	11,270	LB= 6,420	LA= 10,550	11,720	6,820
	LB=	9,930	9,930	9,930	8,190	8,190	8,190	9,240	9,240	LC= 9,240	LB= 10,290	10,290	10,290
	LC=	2,800	2,800	2,800	8,900	8,900	8,900	9,950	9,950	LD= 9,950	LC= 11,000	11,000	11,000
70.0	FA	FA	FA	F-2	F-2	G-2 LA= 7,450	F-2	F-2	G-2 7,450	F-2	H-2 LA= 6,550	H-2 7,450	
	LA=	9,180	10,440	11,700	LA= 10,480	11,740	LB= 5,770	LA= 10,880	12,140	6,260	11,310	LC= 9,070	9,070
	LB=	10,550	10,550	10,550	LB= 8,810	8,810	LC= 8,810	LB= 9,940	9,940	9,940	11,070	LD= 9,070	9,070
	LC=	2,800	2,800	2,800	LC= 9,520	9,520	LD= 9,520	LC= 10,650	10,650	10,650	11,780	LE= 5,830	5,830
73.0	FA	FA	FA	F-2	F-2	G-2 LA= 7,450	F-2	G-2 6,550	G-2 7,450	H-2 LA= 5,850	H-2 6,550	H-2 7,450	
	LA=	9,500	10,820	12,130	LA= 10,770	12,080	LB= 6,330	11,270	6,420	6,840	LC= 9,390	9,390	9,390
	LB=	10,910	10,910	10,910	LB= 9,040	9,040	LC= 9,030	10,220	10,210	10,210	LD= 9,390	9,390	9,390
	LC=	2,800	2,800	2,800	LC= 9,750	9,750	LD= 9,740	10,930	10,920	10,920	LE= 5,830	5,830	5,830
75.0	FB	FB	FB	F-2	G-2 LA= 6,550	G-2 7,450	F-2	G-2 6,550	G-2 7,450	G-2 7,450	H-2 LA= 5,850	H-2 6,550	H-2 7,450
	LA=	8,360	9,720	12,420	LA= 11,050	LB= 6,230	6,680	11,570	6,730	7,180	LC= 9,620	9,620	9,620
	LB=	10,790	10,790	10,790	LB= 9,210	LC= 9,190	9,190	10,410	10,400	10,400	LD= 9,620	9,620	9,620
	LC=	2,800	2,800	2,800	LC= 9,920	LD= 9,900	9,900	11,120	11,100	11,100	LE= 5,830	5,830	5,830
78.0	F-2	G-2 LA= 7,450	G-2 8,530	F-2	G-2 7,450	G-2 8,530	G-2 6,420	G-2 7,450	G-2 8,530	H-2 LA= 6,420	H-2 7,450	H-2 8,530	
	LA=	10,870	LB= 5,230	5,560	LA= 11,450	5,770	6,100	5,930	6,300	6,630	LC= 9,960	9,960	9,960
	LB=	8,190	LC= 8,190	8,190	LB= 9,440	9,460	9,460	10,700	10,700	10,700	LD= 9,960	9,960	9,960
	LC=	8,900	LD= 8,900	8,900	LC= 10,150	10,170	10,170	11,410	11,410	11,410	LE= 5,830	5,830	5,830
80.0	F-2	F-2	G-2 LA= 8,530	F-2	F-2	G-2 8,530	F-2	F-2	G-2 8,530	F-2	F-2	H-2 8,530	
	LA=	11,180	12,440	LB= 5,910	11,740	12,440	6,460	8,990	12,440	7,160	11,740	12,440	10,200
	LB=	7,760	7,760	LC= 8,320	7,760	7,760	9,610	10,260	10,260	10,910	11,550	11,550	10,200
	LC=	8,470	8,470	LD= 9,030	8,470	8,470	10,320	10,960	10,960	11,620	12,260	12,260	5,830

■参考寸法表 ●流入水質/BOD 200mg/ℓ・250mg/ℓ・300mg/ℓ・350mg/ℓ ●放流水質/BOD 20mg/ℓ以下

処理対象人員(人)		101~500											
流入水質(BOD)	排水時間(Hr)	200mg/ℓ			250mg/ℓ			300mg/ℓ			350mg/ℓ		
		12	10	8	12	10	8	12	10	8	12	10	8
83.0	F-2	G-2	G-2	F-2	G-2	G-2	G-2	G-2	G-2	H-2	H-2	H-2	
		LA= 8,530	9,610		8,530	9,610	7,450	8,530	9,610	LB= 6,410	8,530	9,610	
	LA= 11,580	LB= 4,900	5,310	12,160	5,480	5,890	5,690	6,060	6,470	LC= 10,530	10,530	10,530	
	LB= 8,510	LC= 8,460	8,460	9,850	9,850	9,850	11,180	11,180	11,180	LD= 10,530	10,530	10,530	
	LC= 9,220	LD= 9,170	9,170	10,560	10,560	10,560	11,890	11,890	11,890	LE= 5,830	5,830	5,830	
85.0	F-1	G-1	G-1	G-1	G-1	G-1	H-1	H-1	H-1	H-1	H-1	H-1	
		LA= 7,450	8,530	6,420	7,450	8,530	LB= 6,980	7,480	7,930	7,580	8,080	8,530	
	LA= 11,850	LB= 6,310	6,760	6,410	6,910	7,360	LC= 9,390	9,390	9,390	10,760	10,760	10,760	
	LB= 8,930	LC= 8,930	8,930	10,320	10,320	10,320	LD= 9,390	9,390	9,390	10,760	10,760	10,760	
	LC= 9,640	LD= 9,640	9,640	11,030	11,030	11,030	LE= 7,280	7,280	7,280	7,280	7,280	7,280	
88.0	F-1	G-1	G-1	G-1	G-1	G-1	H-1	H-1	H-1	H-1	H-1	H-1	
		LA= 7,450	8,530	6,420	7,450	8,530	LB= 7,410	7,970	8,470	8,030	8,590	9,090	
	LA= 12,240	LB= 6,740	7,240	6,790	7,350	7,850	LC= 9,680	9,680	9,680	11,100	11,100	11,100	
	LB= 9,110	LC= 9,110	9,110	10,540	10,540	10,540	LD= 9,680	9,680	9,680	11,100	11,100	11,100	
	LC= 9,820	LD= 9,820	9,820	11,250	11,250	11,250	LE= 7,280	7,280	7,280	7,280	7,280	7,280	
90.0	G-1	G-1	G-1	G-1	G-1	G-1	H-1	H-1	H-1	H-1	H-1	H-1	
		LA= 6,600	8,270	9,470	6,600	8,270	9,470	LB= 7,560	7,460	7,880	8,190	8,090	8,510
	LA= 6,600	8,270	9,470	6,600	8,270	9,470	LB= 7,560	7,460	7,880	8,190	8,090	8,510	
	LB= 6,260	6,210	6,630	6,890	6,840	7,260	LC= 9,870	9,870	9,870	11,340	11,340	11,340	
	LC= 9,240	9,240	9,240	10,690	10,690	10,690	LD= 9,870	9,870	9,870	11,340	11,340	11,340	
95.0	G-1	G-1	G-1	G-1	G-1	G-1	H-1	H-1	H-1	H-1	H-1	H-1	
		LA= 6,550	8,070	9,470	6,550	8,070	9,470	LB= 7,420	7,310	7,840	8,080	7,970	8,500
	LA= 6,550	8,070	9,470	6,550	8,070	9,470	LB= 7,420	7,310	7,840	8,080	7,970	8,500	
	LB= 7,010	7,200	7,510	7,640	7,830	8,140	LC= 10,360	10,360	10,360	11,890	11,890	11,890	
	LC= 9,580	9,580	9,580	11,100	11,100	11,100	LD= 10,360	10,360	10,360	11,890	11,890	11,890	
100.0	G-1	G-1	G-1	G-1	G-1	G-1	H-1	H-1	H-1	H-1	H-1	H-1	
		LA= 6,960	8,760	9,850	6,960	8,760	9,850	LB= 8,170	8,120	8,740	8,860	8,810	9,430
	LA= 6,960	8,760	9,850	6,960	8,760	9,850	LB= 8,170	8,120	8,740	8,860	8,810	9,430	
	LB= 7,310	7,310	8,020	7,940	7,940	8,650	LC= 10,840	10,840	10,840	12,460	12,460	12,460	
	LC= 9,900	9,900	9,900	11,510	11,510	11,510	LD= 10,840	10,840	10,840	12,460	12,460	12,460	

流量調整タイプ ダイカンRT-2型

■参考寸法表 ●流入水質/BOD 200mg/ℓ・250mg/ℓ・300mg/ℓ・350mg/ℓ ●放流水質/BOD 20mg/ℓ以下

処理対象人員(人) **501~5,000**

流入水質(BOD)	200mg/ℓ			250mg/ℓ			300mg/ℓ			350mg/ℓ		
	12	10	8	12	10	8	12	10	8	12	10	8
38.0	JA LA= 8,430 LB= 8,720	JA 9,110 8,720	JA 9,800 8,720	JA 8,430 9,900	JA 9,110 9,900	JA 9,800 9,900	JA 8,430 11,090	JA 9,110 11,090	JA 9,800 11,090	JA 8,430 12,270	JA 9,110 12,270	JA 9,800 12,270
65.0	J LA= 5,780 LB= 6,050 LC= 7,310 LD= 8,020	J 6,450 6,560 7,310 8,020	J 7,000 7,180 7,310 8,020	J 5,780 6,330 8,320 9,030	J 6,450 6,840 8,320 9,030	J 7,000 7,460 8,320 9,030	J 5,780 6,620 9,330 10,040	J 6,450 7,130 9,330 10,040	J 7,000 7,750 9,330 10,040	J 5,780 6,900 10,340 11,050	J 6,450 7,410 10,340 11,050	J 7,000 8,030 10,340 11,050
70.0	J LA= 6,420 LB= 6,030 LC= 7,630 LD= 8,340	J 7,200 6,520 7,630 8,340	J 7,860 7,120 7,630 8,340	J 6,420 6,330 8,710 9,420	J 7,200 6,820 8,710 9,420	J 7,860 7,420 8,710 9,420	J 6,420 6,640 9,790 10,500	J 7,200 7,130 9,790 10,500	J 7,860 7,730 9,790 10,500	J 6,420 6,940 10,890 11,600	J 7,200 7,430 10,890 11,600	J 7,860 8,030 10,890 11,600
75.0	J LA= 6,760 LB= 6,340 LC= 7,940 LD= 8,650	J 7,450 6,990 7,940 8,650	J 8,140 7,650 7,940 8,650	J 6,760 6,670 9,140 9,850	J 7,450 7,320 9,140 9,850	J 8,140 7,980 9,140 9,850	J 6,760 6,990 10,280 10,990	J 7,450 7,640 10,280 10,990	J 8,140 8,300 10,280 10,990	K-1 LA= 6,760 LB= 7,320 LC= 9,300 LD= 10,100 LE= 2,800 LF= 2,800	K-1 7,450 7,970 9,300 10,100 2,800 2,800	K-1 8,140 8,630 9,300 10,100 2,800 2,800
80.0	J LA= 7,750 LB= 5,940 LC= 8,240 LD= 8,950	J 8,150 6,980 8,240 8,950	J 8,550 8,020 8,240 8,950	J 7,750 6,290 9,490 10,200	J 8,150 7,330 9,490 10,200	J 8,550 8,370 9,490 10,200	J 7,750 6,640 10,730 11,440	J 8,150 7,680 10,730 11,440	J 8,550 8,720 10,730 11,440	K-1 LA= 7,750 LB= 6,990 LC= 9,840 LD= 10,550 LE= 2,800 LF= 2,800	K-1 8,150 8,030 9,840 10,550 2,800 2,800	K-1 8,550 9,070 9,840 10,550 2,800 2,800
85.0	J LA= 7,750 LB= 6,680 LC= 8,570 LD= 9,280	J 8,150 7,710 8,570 9,280	J 8,550 8,840 8,570 9,280	J 7,750 6,950 9,890 10,600	J 8,150 8,080 9,890 10,600	J 8,550 9,210 9,890 10,600	J 7,750 7,330 11,210 11,920	J 8,150 8,460 11,210 11,920	J 8,550 9,590 11,210 11,920	K-1 LA= 7,750 LB= 7,690 LC= 10,390 LD= 10,560 LE= 2,800 LF= 2,800	K-1 8,150 8,820 10,390 10,560 2,800 2,800	K-1 8,550 9,950 10,390 10,560 2,800 2,800
90.0	J LA= 7,750 LB= 7,180 LC= 8,860 LD= 9,570	J 8,150 8,400 8,860 9,570	J 8,950 9,220 8,860 9,570	J 7,750 7,580 10,260 10,970	J 8,150 8,800 10,260 10,970	J 8,950 9,620 10,260 10,970	K-1 LA= 7,750 LB= 7,970 LC= 9,520 LD= 10,230 LE= 2,800 LF= 2,800	K-1 8,150 9,190 9,520 10,230 2,800 2,800	K-1 8,950 10,010 9,520 10,230 2,800 2,800	K-1 LA= 7,750 LB= 8,360 LC= 10,920 LD= 11,630 LE= 2,800 LF= 2,800	K-1 8,150 9,580 10,920 11,630 2,800 2,800	K-1 8,950 10,400 10,920 11,630 2,800 2,800
95.0	J LA= 8,150 LB= 7,420 LC= 9,190 LD= 9,900	J 8,950 8,330 9,190 9,900	J 9,650 9,340 9,190 9,900	J 8,150 7,830 10,670 11,380	J 8,950 8,740 10,670 11,380	J 9,650 9,750 10,670 11,380	K-1 LA= 8,150 LB= 8,250 LC= 10,000 LD= 10,710 LE= 2,800 LF= 2,800	K-1 8,950 9,160 10,000 10,710 2,800 2,800	K-1 9,650 10,170 10,000 10,710 2,800 2,800	M LA= 8,150 LB= 8,660 LC= 7,130 LD= 7,130 LE= 5,270 LF= 5,970 LG= 2,800 LH= 2,800	M 8,950 9,570 7,130 7,130 5,270 5,970 2,800 2,800	M 9,650 10,580 7,130 7,130 5,270 5,970 2,800 2,800

流量調整タイプ ダイカンRT-2型

■参考寸法表 ●流入水質/BOD 200mg/ℓ・250mg/ℓ・300mg/ℓ・350mg/ℓ ●放流水質/BOD 20mg/ℓ以下

処理対象人員(人) **501~5,000**

流入水質(BOD)	200mg/ℓ			250mg/ℓ			300mg/ℓ			350mg/ℓ		
	12	10	8	12	10	8	12	10	8	12	10	8
排水時間(H) 汚水量(m³/日)	K-1	K-1	L-1	K-1	K-1	L-1	M	M	N-1 LA= 8,150	M	N-1	N-1
120.0	LA= 9,900 LB= 8,740 LC= 8,590 LD= 9,300 LE= 2,800 LF= 2,800	10,900 9,910 8,590 9,300 2,800 2,800	L-1 LA= 8,150 LB= 8,000 LC= 7,170 LD= 8,590 LE= 9,300 LF= 2,800 LG= 2,800	9,900 10,900 9,900 10,460 11,160 2,800 2,800	10,900 10,440 10,460 11,160 2,800 2,800	8,150 8,000 7,770 10,460 11,160 2,800 2,800	LA= 9,900 LB= 9,800 LC= 7,840 LD= 7,840 LE= 5,610 LF= 6,130 LH= 2,800	10,900 10,970 7,840 7,840 5,610 6,130 2,800	N-1 LA= 8,150 LB= 8,100 LC= 8,230 LD= 7,840 LE= 7,840 LF= 5,610 LG= 6,310 LI= 2,800	9,900 10,320 8,960 8,960 6,350 7,060 2,800 2,800	N-1 7,000 7,600 8,130 8,960 6,350 7,060 2,800 2,800	N-1 8,150 8,000 8,750 8,960 6,350 7,060 2,800 2,800
125.0	K-1	K-1	L-1	K-1	K-1	L-1	M	N-1 LA= 7,000	N-1	M	N-1	N-1
130.0	K-1	L-1	L-1	M	N-1 LA= 7,750	N-1	M	N-1 LA= 7,750	N-1	M	N-1	N-1
135.0	K-1	L-1	L-1	M	N-1 LA= 7,750	N-1	M	N-1 LA= 7,750	N-1	M	N-1	N-1
140.0	K-1	L-1	L-1	M	N-1 LA= 8,150	N-1	N-1	N-1	N-1	N-1	N-1	N-1

■参考寸法表 ●流入水質/BOD 200mg/ℓ・250mg/ℓ・300mg/ℓ・350mg/ℓ ●放流水質/BOD 20mg/ℓ以下

処理対象人員(人) **501~5,000**

流入水質(BOD)	200mg/ℓ			250mg/ℓ			300mg/ℓ			350mg/ℓ			
	排水時間(Hr)	12	10	8	12	10	8	12	10	8	12	10	8
汚水量(m ³ /日)	K-1	L-1	L-1	M	N-1	N-1	N-1	N-1	N-1	N-1	N-1	N-1	N-1
145.0				LA= 11,000	LA= 8,150	9,650	7,200	8,150	9,650	7,200	8,150	9,650	9,650
		LA= 8,150	9,650	LB= 8,500	8,500	9,000	7,600	8,500	9,000	7,600	8,500	9,000	9,000
		LB= 10,720	7,910	8,510	LC= 7,840	LD= 7,840	7,840	9,180	9,180	9,180	10,530	10,530	10,530
		LC= 10,090	LD= 10,090	10,090	LE= 5,610	LF= 5,610	5,610	6,500	6,500	6,500	7,390	7,390	7,390
		LD= 10,790	LE= 10,790	10,790	LG= 2,800	LH= 2,800	2,800	2,800	2,800	2,800	2,800	2,800	2,800
		LE= 2,800	LF= 2,800	2,800	LI= 2,800	2,800	2,800	2,800	2,800	2,800	2,800	2,800	2,800
		LF= 2,800	LG= 2,800	2,800	LH= 2,800	LI= 2,800	2,800	2,800	2,800	2,800	2,800	2,800	2,800
		LG= 2,800											
147.0				LA= 11,300	LA= 8,550	9,650	7,200	8,550	9,650	7,200	8,550	9,650	9,650
		LA= 8,550	9,650	LB= 8,500	8,500	9,500	7,600	8,500	9,500	7,600	8,500	9,500	9,500
		LB= 10,990	7,940	8,490	LC= 7,980	LD= 7,980	7,980	9,350	9,350	9,350	10,720	10,720	10,720
		LC= 10,270	LD= 10,270	10,270	LE= 5,700	LF= 5,700	5,700	6,610	6,610	6,610	7,530	7,530	7,530
		LD= 10,980	LE= 10,980	10,980	LG= 2,800	LH= 2,800	2,800	2,800	2,800	2,800	2,800	2,800	2,800
		LE= 2,800	LF= 2,800	2,800	LI= 2,800	2,800	2,800	2,800	2,800	2,800	2,800	2,800	2,800
		LF= 2,800	LG= 2,800	2,800	LH= 2,800	LI= 2,800	2,800	2,800	2,800	2,800	2,800	2,800	2,800
		LG= 2,800											
148.0				LA= 7,200	LA= 8,550	9,650	7,200	8,550	9,650	7,200	8,550	9,650	9,650
				LB= 8,000	8,500	9,500	8,000	8,500	9,500	8,000	8,500	9,500	9,500
		LA= 8,550	9,650	LC= 7,920	8,740	9,310	8,560	9,380	9,950	9,210	10,030	10,600	10,600
		LB= 11,120	8,090	8,660	LD= 8,030	8,030	8,030	9,410	9,410	9,410	10,790	10,790	10,790
		LC= 10,340	LD= 10,340	10,340	LE= 8,030	8,030	8,030	9,410	9,410	9,410	10,790	10,790	10,790
		LD= 11,040	LE= 11,040	11,040	LG= 6,440	6,440	6,440	7,360	7,360	7,360	8,280	8,280	8,280
		LE= 3,000	LF= 3,000	3,000	LH= 3,000	3,000	3,000	3,000	3,000	3,000	3,000	3,000	3,000
		LF= 3,000	LG= 3,000	3,000	LI= 3,000	3,000	3,000	3,000	3,000	3,000	3,000	3,000	3,000
150.0				LA= 7,200	LA= 8,550	9,650	7,200	8,550	9,650	7,200	8,550	9,650	9,650
				LB= 8,000	8,500	9,500	8,000	8,500	9,500	8,000	8,500	9,500	9,500
		LA= 8,550	9,650	LC= 8,170	9,020	9,630	8,830	9,680	10,290	9,490	10,340	10,950	10,950
		LB= 11,370	8,370	8,980	LD= 8,120	8,120	8,120	9,520	9,520	9,520	10,920	10,920	10,920
		LC= 10,460	LD= 10,460	10,460	LE= 8,120	8,120	8,120	9,520	9,520	9,520	10,920	10,920	10,920
		LD= 11,160	LE= 11,160	11,160	LG= 6,500	6,500	6,500	7,430	7,430	7,430	8,360	8,360	8,360
		LE= 3,000	LF= 3,000	3,000	LH= 3,000	3,000	3,000	3,000	3,000	3,000	3,000	3,000	3,000
		LF= 3,000	LG= 3,000	3,000	LI= 3,000	3,000	3,000	3,000	3,000	3,000	3,000	3,000	3,000
155.0				LA= 7,200	LA= 8,550	9,650	7,200	8,550	9,650	7,200	8,550	9,650	9,650
				LB= 8,000	8,500	9,500	8,000	8,500	9,500	8,000	8,500	9,500	9,500
		LA= 7,200	8,550	9,650	LC= 8,820	9,760	10,460	9,490	10,430	11,130	9,770	10,710	11,410
		LB= 8,000	8,500	9,500	LD= 8,360	8,360	8,360	9,800	9,800	9,800	10,380	10,380	10,380
		LC= 8,130	9,070	9,770	LE= 8,360	8,360	8,360	9,800	9,800	9,800	10,380	10,380	10,380
		LD= 10,770	10,770	10,770	LF= 5,950	5,950	5,950	6,910	6,910	6,910	7,300	7,300	7,300
		LE= 11,480	11,480	11,480	LG= 6,650	6,650	6,650	7,620	7,620	7,620	8,000	8,000	8,000
		LF= 3,000	3,000	3,000	LH= 3,000	3,000	3,000	3,000	3,000	3,000	3,000	3,000	3,000
	LG= 3,000	3,000	3,000	LI= 3,000	3,000	3,000	3,000	3,000	3,000	3,000	3,000	3,000	
											320mg/ℓ		
	L-2	L-2	L-2	N-2	N-2	N-2	N-2	N-2	N-2	N-2	N-2	N-2	N-2
155.0				LA= 7,200	8,550	9,650	7,200	8,550	9,650	7,200	8,550	9,650	9,650
				LB= 8,000	8,500	9,500	8,000	8,500	9,500	8,000	8,500	9,500	9,500
		LA= 7,200	8,550	9,650	LC= 8,820	9,760	10,460	9,490	10,430	11,130	9,770	10,710	11,410
		LB= 8,000	8,500	9,500	LD= 8,360	8,360	8,360	9,800	9,800	9,800	10,380	10,380	10,380
		LC= 8,130	9,070	9,770	LE= 8,360	8,360	8,360	9,800	9,800	9,800	10,380	10,380	10,380
		LD= 10,770	10,770	10,770	LF= 5,950	5,950	5,950	6,910	6,910	6,910	7,300	7,300	7,300
		LE= 11,480	11,480	11,480	LG= 6,650	6,650	6,650	7,620	7,620	7,620	8,000	8,000	8,000
		LF= 3,000	3,000	3,000	LH= 3,000	3,000	3,000	3,000	3,000	3,000	3,000	3,000	3,000
	LG= 3,000	3,000	3,000	LI= 3,000	3,000	3,000	3,000	3,000	3,000	3,000	3,000	3,000	

流量調整タイプ ダイカンRT-2型

■参考寸法表 ●流入水質/BOD 200mg/ℓ・250mg/ℓ・300mg/ℓ・320mg/ℓ ●放流水質/BOD 20mg/ℓ以下

処理対象人員(人) **501~5,000**

流入水質(BOD)		200mg/ℓ			250mg/ℓ			300mg/ℓ			320mg/ℓ		
汚水量(m ³ /日)	排水時間(H)	12	10	8	12	10	8	12	10	8	12	10	8
	160.0	N-2	8,550	N2	9,650	N-2	8,550	N-2	9,650	N-2	8,550	N-2	9,650
LA=		8,550	9,650		8,550	9,650		8,550	9,650		8,550	9,650	
LB=		8,000	9,500		8,000	9,500		8,000	9,500		8,000	9,500	
LC=		7,400	7,680		8,110	8,390		8,810	9,090		9,090	9,370	
LD=		7,100	7,100		8,590	8,590		10,080	10,080		10,680	10,680	
LE=		7,100	7,100		8,590	8,590		10,080	10,080		10,680	10,680	
LF=		5,110	5,110		6,100	6,100		7,100	7,100		7,490	7,490	
LG=		5,820	5,820		6,810	6,810		7,800	7,800		8,200	8,200	
LH=		3,000	3,000		3,000	3,000		3,000	3,000		3,000	3,000	
LI=		3,000	3,000		3,000	3,000		3,000	3,000		3,000	3,000	
165.0	N-2	8,550	N2	9,650	N-2	8,550	N-2	9,650	N-2	8,550	N-2	9,650	
	LA=	8,550	9,650		8,550	9,650		8,550	9,650		8,550	9,650	
	LB=	8,500	9,500		8,500	9,500		8,500	9,500		8,500	9,500	
	LC=	7,530	8,400		8,250	9,120		8,970	9,840		9,270	10,140	
	LD=	7,280	7,280		8,820	8,820		10,360	10,360		10,970	10,970	
	LE=	7,280	7,280		8,820	8,820		10,360	10,360		10,970	10,970	
	LF=	5,230	5,230		6,260	6,260		7,280	7,280		7,690	7,690	
	LG=	5,940	5,940		6,960	6,960		7,990	7,990		8,400	8,400	
	LH=	3,000	3,000		3,000	3,000		3,000	3,000		3,000	3,000	
	LI=	3,000	3,000		3,000	3,000		3,000	3,000		3,000	3,000	
170.0	N-2	8,550	N2	9,650	N-2	8,550	N-2	9,650	N-2	8,550	N-2	9,650	
	LA=	8,550	9,650		8,550	9,650		8,550	9,650		8,550	9,650	
	LB=	8,500	9,500		8,500	9,500		8,500	9,500		8,500	9,500	
	LC=	8,140	9,110		8,890	9,850		9,630	10,590		9,630	10,590	
	LD=	7,470	7,470		9,050	9,050		10,640	10,640		11,270	11,270	
	LE=	7,470	7,470		9,050	9,050		10,640	10,640		11,270	11,270	
	LF=	5,360	5,360		6,410	6,410		7,470	7,470		7,890	7,890	
	LG=	6,060	6,060		7,120	7,120		8,180	8,180		8,600	8,600	
	LH=	3,000	3,000		3,000	3,000		3,000	3,000		3,000	3,000	
	LI=	3,000	3,000		3,000	3,000		3,000	3,000		3,000	3,000	
175.0	N-2	9,650	N2	10,450	N-2	9,650	N-2	10,450	N-2	9,650	N-2	10,450	
	LA=	9,650	10,450		9,650	10,450		9,650	10,450		9,650	10,450	
	LB=	8,500	10,000		8,500	10,000		8,500	10,000		8,500	10,000	
	LC=	7,660	8,520		8,430	9,290		9,200	10,060		9,200	10,060	
	LD=	7,660	7,660		9,290	9,290		10,920	10,920		11,570	11,570	
	LE=	7,660	7,660		9,290	9,290		10,920	10,920		11,570	11,570	
	LF=	5,480	5,480		6,570	6,570		7,660	7,660		8,090	8,090	
	LG=	6,190	6,190		7,280	7,280		8,360	8,360		8,800	8,800	
	LH=	3,000	3,000		3,000	3,000		3,000	3,000		3,000	3,000	
	LI=	3,000	3,000		3,000	3,000		3,000	3,000		3,000	3,000	
180.0	N-2	9,650	N2	10,450	N-2	9,650	N-2	10,450	N-2	9,650	N-2	10,450	
	LA=	9,650	10,450		9,650	10,450		9,650	10,450		9,650	10,450	
	LB=	8,500	10,000		8,500	10,000		8,500	10,000		8,500	10,000	
	LC=	8,280	9,230		9,070	10,020		9,760	10,710		8,070	9,020	
	LD=	7,840	7,840		9,520	9,520		2,500	2,500		2,500	2,500	
	LE=	7,840	7,840		9,520	9,520		11,200	11,200		11,870	11,870	
	LF=	5,610	5,610		6,720	6,720		11,200	11,200		11,870	11,870	
	LG=	6,310	6,310		7,430	7,430		7,840	7,840		8,290	8,290	
	LH=	3,000	3,000		3,000	3,000		8,550	8,550		9,000	9,000	
	LI=	3,000	3,000		3,000	3,000		3,000	3,000		3,000	3,000	

参考寸法表 ●流入水質/BOD 200mg/ℓ・250mg/ℓ・300mg/ℓ・320mg/ℓ ●放流水質/BOD 20mg/ℓ以下

処理対象人員(人) **501~5,000**

流入水質(BOD)	200mg/ℓ			250mg/ℓ			300mg/ℓ			320mg/ℓ		
	排水時間(Hr)	12	10	8	12	10	8	12	10	8	12	10
汚水量(m ³ /日)	N-2	N-2		N-2	N-2		P	P		P	P	
185.0	LA= 9,650 LB= 9,000 LC= 8,400 LD= 8,030 LE= 8,030 LF= 5,730 LG= 6,440 LH= 3,000 LI= 3,000	10,450 10,000 9,890 8,030 8,030 5,730 6,440 3,000 3,000	8 10,450 10,000 9,210 9,750 9,750 6,880 7,590 3,000 3,000	12 9,650 9,000 9,210 9,750 9,750 6,880 7,590 3,000 3,000	10 10,450 10,000 10,700 9,750 9,750 6,880 7,590 3,000 3,000	8 10,450 10,000 10,700 9,750 9,750 6,880 7,590 3,000 3,000	P LA= 9,650 LB= 9,000 LC= 7,920 LD= 2,500 LE= 11,480 LF= 11,480 LG= 8,030 LH= 8,740 LI= 3,000 LJ= 3,000	P 10,450 10,000 9,410 2,500 11,480 11,480 8,030 8,740 3,000 3,000		P 9,650 9,000 8,240 2,500 12,170 12,170 8,490 9,200 3,000 3,000	P 10,450 10,000 9,730 2,500 12,170 12,170 8,490 9,200 3,000 3,000	
190.0	LA= 9,650 LB= 9,000 LC= 9,020 LD= 8,220 LE= 8,220 LF= 5,850 LG= 6,560 LH= 3,000 LI= 3,000	10,450 10,000 10,650 8,220 8,220 5,850 6,560 3,000 3,000	8 10,450 10,000 9,990 9,990 7,030 7,740 3,000 3,000	12 9,650 9,000 9,850 9,990 9,990 7,030 7,740 3,000 3,000	10 11,000 10,000 11,480 9,990 9,990 7,030 7,740 3,000 3,000	8 11,000 10,000 11,480 9,990 9,990 7,030 7,740 3,000 3,000	P LA= 9,650 LB= 9,000 LC= 8,580 LD= 2,500 LE= 11,760 LF= 11,760 LG= 8,220 LH= 8,920 LI= 3,000 LJ= 3,000	P 10,450 10,000 10,210 2,500 11,760 11,760 8,220 8,920 3,000 3,000		P 9,650 9,000 8,920 2,500 12,470 12,470 8,690 9,390 3,000 3,000	P 10,450 10,000 10,550 2,500 12,470 12,470 8,690 9,390 3,000 3,000	
195.0	LA= 9,650 LB= 9,500 LC= 9,140 LD= 8,400 LE= 8,400 LF= 5,980 LG= 6,690 LH= 3,000 LJ= 3,000	11,000 10,500 10,310 8,400 8,400 5,980 6,690 3,000 3,000	8 11,000 10,500 10,220 10,220 7,190 7,900 3,000 3,000	12 9,650 9,500 9,990 10,220 10,220 7,190 7,900 3,000 3,000	10 11,000 10,500 11,160 10,220 10,220 7,190 7,900 3,000 3,000	8 11,000 10,500 11,160 10,220 10,220 7,190 7,900 3,000 3,000	P LA= 9,650 LB= 9,500 LC= 8,740 LD= 2,500 LE= 12,040 LF= 12,040 LG= 8,400 LH= 9,110 LI= 3,000 LJ= 3,000	P 11,000 10,500 9,910 2,500 12,040 12,040 8,400 9,110 3,000 3,000		P 9,650 9,500 9,090 2,500 12,760 12,760 8,890 9,590 3,000 3,000	P 11,000 10,500 10,260 2,500 12,760 12,760 8,890 9,590 3,000 2,000	
200.0	LA= 9,650 LB= 9,500 LC= 9,770 LD= 8,590 LE= 8,590 LF= 6,100 LG= 6,810 LH= 3,000 LI= 3,000	11,000 10,500 11,020 8,590 8,590 6,100 6,810 3,000 3,000	8 11,000 10,500 10,450 10,450 7,350 8,050 3,000 3,000	12 9,650 9,500 10,640 10,450 10,450 7,350 8,050 3,000 3,000	10 11,000 10,500 11,890 10,450 10,450 7,350 8,050 3,000 3,000	8 11,000 10,500 11,890 10,450 10,450 7,350 8,050 3,000 3,000	P LA= 9,650 LB= 9,500 LC= 9,420 LD= 2,500 LE= 12,320 LF= 12,320 LG= 8,590 LH= 9,300 LI= 3,000 LJ= 3,000	P 11,000 10,500 10,170 2,500 12,320 12,320 8,590 9,300 3,000 3,000		P 9,650 9,500 9,770 2,500 13,060 13,060 9,090 9,790 3,000 3,000	P 11,000 10,500 10,520 2,500 13,060 13,060 9,090 9,790 3,000 3,000	

■原水ポンプ槽

槽本体内蔵型		別置型	
CN型(沈殿分離タイプ) 		CN型(沈殿分離タイプ) 	
RT型(流量調整タイプ) 		RT型(流量調整タイプ) 	

標準仕様	種別	槽本体内蔵型	別置型
	直径(D)mm	2,800φ	1,700φ・2,000φ・2,500φ・2,800φ
	長さ(L)mm	700~2,000	—
	高さ(H)mm	3,100~3,400	3,100~4,000

■水中ブロー槽

槽本体内蔵型		別置型	

標準仕様	種別	槽本体内蔵型	別置型
	直径(D)mm	2,800φ	1,700φ・2,000φ・2,500φ・2,800φ
	長さ(L)mm	700~1,500	—
	高さ(H)mm	3,100~3,400	3,100~3,400

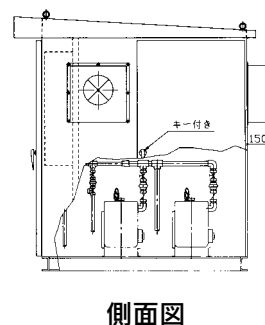
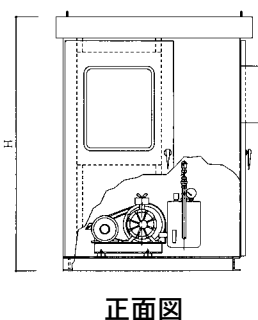
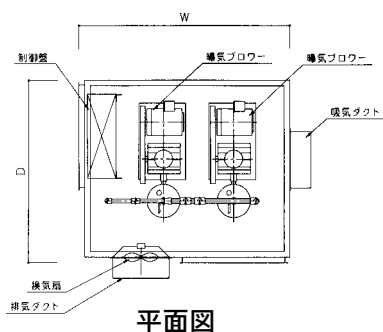
機械室 (鋼板製)



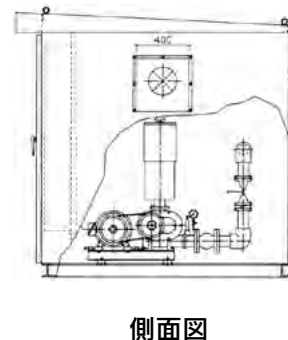
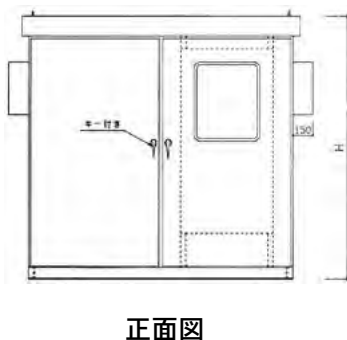
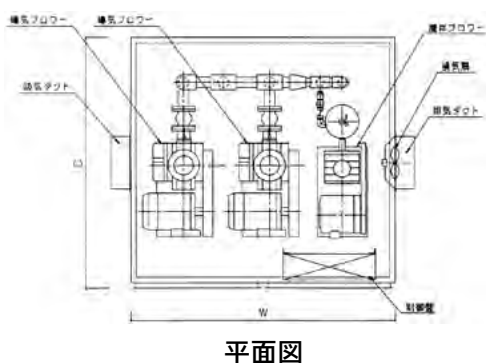
- ◎給気、排気用消音ボックスを設置し、室内にグラスウール25m/mの内貼り等防音設備を行っていますので、10ホン以上の減音が可能です。
- ◎換気扇が設置されていますので、室内の温度、湿度管理の心配がありません。
- ◎ドアにカギが付いていますので、安全です。

●構造例

●CN用機械室



●RT用機械室



■仕様

項目	型式	小規模タイプ	中・大規模タイプ	重量kg
寸法 (幅×奥行×高さ)	1型	1500 ^W ×1300 ^D ×1800 ^H	1600 ^W ×1600 ^D ×1800 ^H 1700 ^W ×1700 ^D ×1800 ^H 2000 ^W ×1900 ^D ×2000 ^H 2400 ^W ×2200 ^D ×2000 ^H	600~750
	2型	1600 ^W ×1500 ^D ×1800 ^H		600~750
	3型			700~900
	4型			700~900
	5型			1000~1200
	6型			1000~1300
外被材質	表面塗装クリーム色2.5Y9/1(メラミン樹脂焼付)2.3t鋼板			
給、排気、消音ボックス	同上			
換気	強制換気(25Wサーモスタット付換気扇)			
照明	蛍光灯20W			

合併処理浄化槽

三次処理装置

中水道装置

産業廃水処理装置

医療廃水処理装置

家畜汚水処理装置

総合水処理メーカー



本社: 福岡市中央区平尾3丁目1番3号
電話(092)522-8406(代)

工場: 鹿児島県薩摩川内市勝目町字山口田6314-1
電話(0996)25-3541

ご相談、ご用命は…